

Transferring Historical WeatherLink Computer Software Data to your WeatherLink Live

You have been collecting your weather data with a data logger and storing it on your computer using WeatherLink Computer Software. Now you have added a WeatherLink Live to your system. You can add your historical data to your WeatherLink Live's data on the WeatherLink cloud, using the "import" feature.

Important Note: You will need to upgrade your WeatherLink Live to Pro or Pro+ to access and store historical data. However, if you import data and your WeatherLink Live is not upgraded, the data will still be used in the "Almanac" area of the app, where highs and lows for years, months, and days are shown.

IMPORTANT

Once a transfer takes place, the process cannot easily be undone. It is vital that you follow these instructions carefully to avoid selecting the wrong data to import, improperly formatting the data, creating data gaps, or transferring data to the wrong destination. Even after your WeatherLink Live is up and running, we advise you to continue to operate your console and WeatherLink Computer Software until you confirm that all the data was transferred successfully. (Your data logger and WeatherLink Live can operate at the same time.)

BEFORE YOU START...

INSTALL AND SET UP YOUR WEATHERLINK LIVE

TIP To set up your WeatherLink Live, you'll need the mobile app, available at Google Play or the Apple App Store.

TIP Don't know how you have set up your stations in your existing console?

Importing data from a different system, where the set of data might not be the same as your current WeatherLink Live configuration?

See special instructions on pages 5 & 6.

Before you can transfer historical data into your WeatherLink Live, your WeatherLink Live needs to be up and running and creating new records that the older records will fold into. You need to make sure you have all the individual stations you need in WeatherLink Live to accommodate the historical records.

What does this mean? When you installed your WeatherLink Live, you set it up to "listen" to your transmitting station(s) by transmitter ID. When you import historical data, you will tell the data where to go by matching, or "mapping," it to a specific ID.

Many users will have only one active weather station, a Vantage Pro2 or Vantage Vue, reporting to a console, and transmitting to your WeatherLink Live on transmitter ID 1. You will need only one individual station set up in your WeatherLink Live.

But you may have data from an additional transmitting station, such as a temperature-humidity station, also reporting to the console. You set this station to transmit on transmitter ID 2, and your console is set to "listen" to it on ID 2. You will need another station set up in WeatherLink Live, set up to "listen" on ID 2. In this case you should have two stations set up in WeatherLink Live before you start importing. During the import setup, you will be able to "map" your historical data to fold into the correct WeatherLink Live station by ID.

START THE IMPORT PROCESS

TIP

On Weatherlink.com, clicking on the  icon above and to the right of your station will open the settings for your account and station. Clicking the  icon will open a pane that shows you your basic WeatherLink Live device information.

If you have not already logged into your WeatherLink.com account, do so, using the same username and password you created to install your WeatherLink Live.

Make sure your WeatherLink Live is selected if you have more than one station on your WeatherLink.com account. (If you have more than one WeatherLink Live, choose the one you want to import your data into.)

Click the Tools icon (it looks like a wrench) to see and click the **import** tab in the top right.

The first screen will prompt you to confirm your elevation and time zone. In order to correctly calculate barometric pressure data, you will need to verify that you have set these correctly in WeatherLink Live. You will see what you have set these values to. If they are wrong, click the edit button to change them. When they are correct, click **confirm** and then **Start Import**.



IMPORT STEP 1: UPDATE YOUR COMPUTER SOFTWARE.

TIP

In Windows, you can see your current software version by hovering over the shortcut, or on the top bar of the software in either Windows or Mac.

It is important that you have the latest version of the WeatherLink Computer Software installed on your computer. If you don't, update it now by clicking the link on this screen.

Click **Next**.



IMPORT STEP 2: CONFIGURE YOUR SOFTWARE SETTINGS.

The next steps will produce a text file containing all the data you are planning to transfer to your WeatherLink Live.

Verify that your units are correct for export.

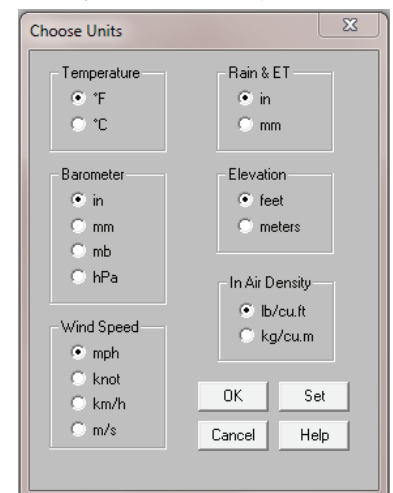
The import tool needs unit settings to be set in a specific way. To check (and possibly modify) these settings, *in the WeatherLink Computer Software* click **Setup** then **Select Units**.

A dialog box will open showing you the current software presentation settings, which will dictate the units in which the data will be prepared for export. If you view your data using US units, then it's likely you have no changes to make here.

TIP

Metric users: don't worry! These changes are only temporary. You can change them back after the export file is created.

If you prefer metric units, or a combination of both, you will likely need to change some. Data will be automatically imported in US units EXCEPT Rain and ET.



Make sure all other choices are as shown here: Temperature: F; Barometer: in; Wind Speed : mph; Elevation: feet; In Air Density: lb/cu.ft.

Because Davis rain collectors come in both metric and US versions, you have already set which you use for Rain and ET settings. Keeping this setting as you found it will ensure that there is no rounding data on imported data. **Do not change this setting but do make a note of which button is selected.**

Click **OK** to save your settings. (Clicking **SET** will not save the settings. **SET** affects the units shown on your console, but not the way data is formatted for export.)

Back on *the WeatherLink.com import walkthrough*, click **Next** to move to the next step.

3 IMPORT STEP 3: EXPORT AND UPLOAD

Choose the data set to include in the report and create the upload file.

In the WeatherLink Computer Software, click **Window** then **Browse**. Type Ctrl+W on your keyboard,

or click the 

TIP If you ever wanted to make changes to odd data in your historical database, now is the time to do it. Double-click a row in your browse records to pull up a dialog box that allows you to alter individual records, such as eliminating an odd spike in a temperature or wind reading, or adding rainfall. Making these changes now will ensure that the new data for averages and all-time records are unaffected by old artifacts in the merged data. You cannot edit records on WeatherLink.com.

You will first see a section of the data available for export. It is a good idea to inspect this browse window to make sure all of the data you expect to see is in the columns. (Scroll to the right to see additional columns.). If anything is missing, check your station configuration (click **Setup** then **Station Config**; or Ctrl+C) to see if any check buttons were missed.

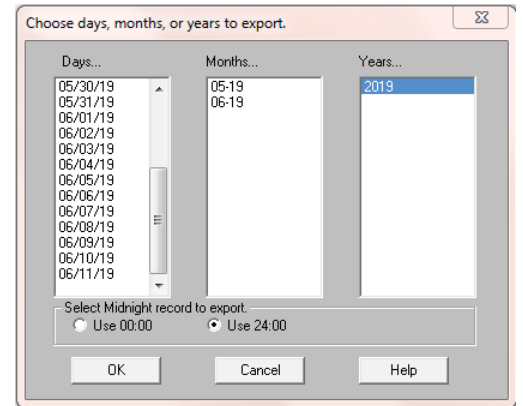
Once you have confirmed that all of your data is present, you can begin the process of creating the upload file.

From the top menu in *the WeatherLink Computer software*, click **Browse** then **Export Records**. A dialog box will open showing all the data available by days, months, and years.

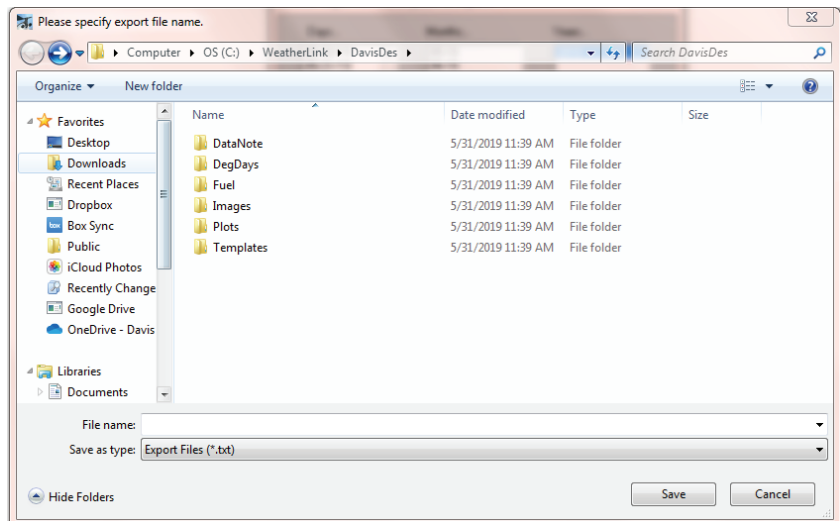
Unless you have specific reasons to do otherwise, Davis highly recommends that you select all available years in the right-hand column. Selecting years will automatically include all available days and months within those years.

Make sure "Use 24:00" is selected for the midnight export record.

Click **OK**. When prompted, name and save the file. (Note where you saved it.)



TIP You can name this text file anything memorable to you but be sure to save as type .txt. The computer software will default to placing this file in a sub-directory of the WeatherLink Computer Software program file. For convenience later, you can select "Downloads" from the folders menu instead. When the online transfer tool searches for this file, it will start looking in the Downloads folder. If you put it somewhere else, just note where you saved it.



Note file name and location here:

File Name: _____ .txt Location: _____

Your data is now saved and ready for transfer. You can now go back to the unit settings in your computer software and change any units you wish back to metric.

Back on *the WeatherLink.com import walkthrough*, click **Browse to upload file** to move to the next step.

4

IMPORT STEP 4: MAP YOUR DATA

Tell the import tool what file to upload and where to put that historical data.

First, choose the name of the file under Computer Software Data.

Then, choose the station on WeatherLink Live you want to import the data into. If you only have one sensor suite transmitting on ID 1, there will only be one choice in "WeatherLink Live Destinations" list. Choose this one.

If you have more than one station, such as a Temperature Humidity station transmitting on ID 2, it will also show up in the list.

Click **import** to begin the import process.

VANTAGE VUE OWNERS: A SPECIAL NOTE ON BAROMETER RECORDS

The barometer is in your console or Envoy, not the sensor suite. For Vantage Pro2 and Envoy owners, the recorded barometer reading is automatically adjusted for altitude. For these, your historic barometer data will be reflected in the new database as "Barometric Pressure". There's nothing additional you will need to do.

Vantage Vue owners were offered a choice during setup between the default NOAA setting or Altimeter Setting. Because the new online database supports several types of pressure readings, you will need to indicate which you chose ("NOAA" or "ALT SETTING").

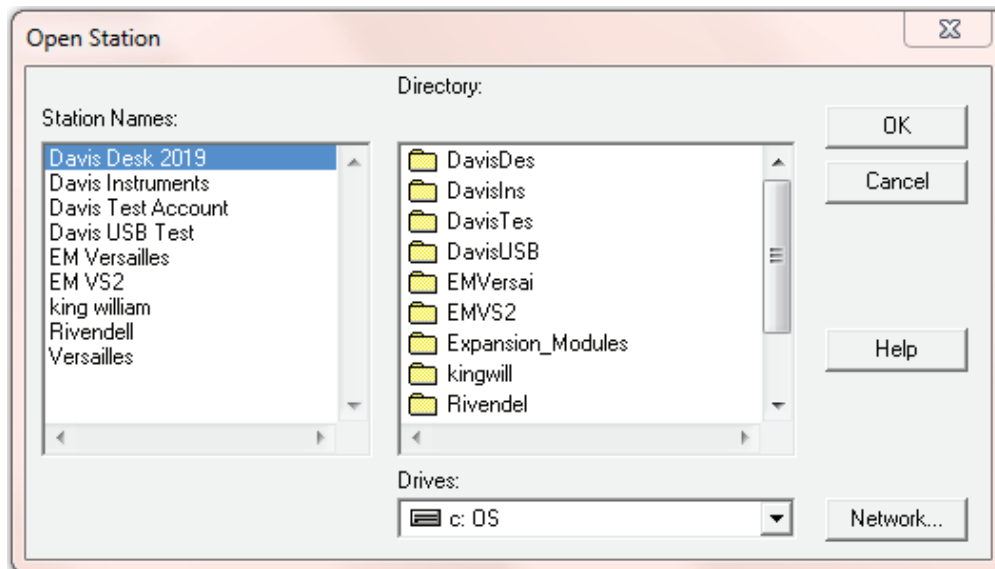
In the final portion of the online data transfer setup, if yours is a Vantage Vue, you will be asked how your console is set up for barometric pressure. If you don't know, on your console press **2nd** and then **SETUP**. Then press **DONE** until you get to the **Bar Reduction Setting** screen. Note which one it shows. Press and hold **DONE** to return to the **Current Weather** screen.



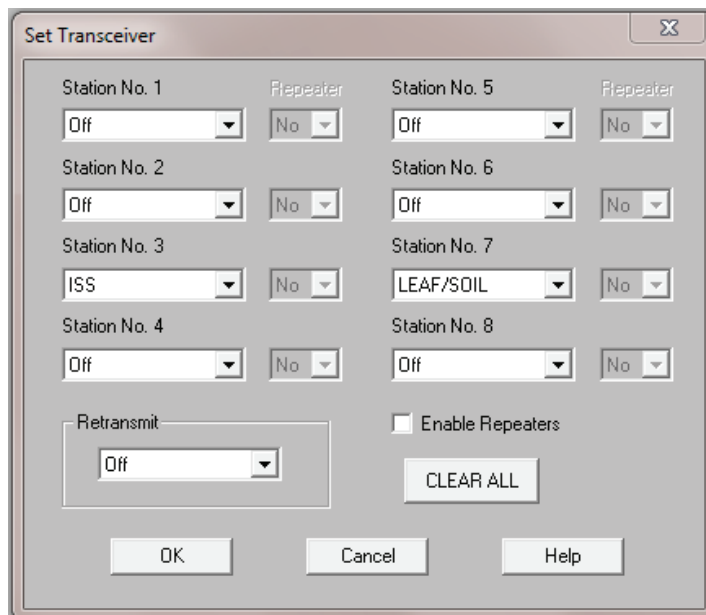
TROUBLESHOOTING AND FAQs

HOW TO FIND OUT HOW YOUR STATIONS ARE SET UP IN THE SOFTWARE

In the *WeatherLink Computer Software*, open the station where your target data was accumulated. To do this, click **File** then **Open Station**. (Or use the keyboard shortcut: Ctrl+O to open the station.)



Select your station from the list on the left, then click OK.



Now you can view the transmitter IDs you have set for your sensor suite and other transmitting stations by clicking **Setup** the **Set Transceiver**.

If you have not made any changes to your station IDs, your WeatherLink Live station configuration should have the same setup as you had for your console or Envoy.

IMPORTING DATA FROM A DIFFERENT SYSTEM

If you are importing data from a different system where the set of data might be different than your current WeatherLink Live configuration, it will be helpful to inspect the station configuration that accompanies the data you want to transfer.

To do this, in *the WeatherLink Computer Software*, click **Setup** then **Station Config**. (Or use the keyboard shortcut of Ctrl+C.)

The screenshot shows the 'Station Configuration' dialog box. The 'Name' field is 'Davis Desk 2019' and the 'Model' is 'Vantage Pro Plus'. There is a checkbox for 'Show indoor data only' which is unchecked. The 'Accessories' section contains several options: 'Rain Collector' is set to '.01 in', 'Outside Humidity' and 'Solar Radiation' are checked, and 'UV' is also checked. Other accessories like 'Leaf Wetness', 'Leaf Temperature', 'Soil Moisture', and 'Soil Temperature' for multiple sensors are unchecked. The 'Download Options' section has two unchecked checkboxes: 'After download automatically export last 2 days to "download.txt."' and 'Clear archive memory after download.'. The 'Bulletin/Summary Options' section has two dropdown menus, both set to 'Always'. At the bottom are 'OK', 'Cancel', and 'Help' buttons.

Several items here will help explain what data you should expect to have in your historical records. The **Model** will dictate which sensor records will be transferred as part of the sensor suite set. If you had a Vantage Pro Plus or Pro2 Plus, then the Solar Radiation and UV boxes below should also be checked to make sure that this data is included. Customers who have a GroWeather system should make sure that the Solar Radiation is checked.

In the unlikely case your earlier data was from a classic station (Weather Monitor II, Weather Wizard, Perception II, or other specialized console), you should change the model to a Vantage Pro here to make sure all of the columns of data needed for export are collected.

If you have additional transmitting stations, you should also inspect the **Accessories** section to be sure that the additional boxes that reflect the extra stations you have are also checked. The sensors present as part of your extra stations should also have a check mark here.

Data will be automatically imported in US units EXCEPT Rain and ET.

Make sure all other choices are as shown here. (Temperature: F; Barometer: in; Wind Speed : mph; Elevation: feet; In Air Dens

FREQUENTLY ASKED QUESTIONS

I have a new weather station along with my WeatherLink Live. Can I transfer older records from a previous weather station?

Yes. Although you will have some data gap between the end of your old data records and the new ones created by WeatherLink Live, you can add them in. You will have to be sure that you have created a place for the old records to go. For example, if you had a second temp sensor in the past (but not currently) and wanted to add it, you'd need to add it to the WeatherLink Live station configuration anyway, so that you can map that data to a current transmitter ID.

I have some old data from a couple of Davis stations in the past. Can I add the data from both into the new WeatherLink Live dataset?

Yes. You simply need to go through the exercise twice, selecting one station at a time.

Can I upload only some of the data from a certain station?

Yes. It's important to note that once you upload data for a range of dates (2015-2018 for example), you can't then upload any other data that falls within that same range. The import tool will ignore any other data falling into 2015-2018 in this example.

Can I upload data from an Envoy8X?

No. WeatherLink Live is not compatible with data from Envoy8X.

How can I reach Davis Technical Support?

If you need help transferring your data, contact Davis Technical Support. We're happy to help.

E-mail: support@davisinstruments.com

Telephone: (510) 732-7814; Monday - Friday, 7:00 A.M. to 5:30 P.M., Pacific Time